

LA SENNE

CRÉÉ LE
2023-08-09

Surface totale 195.96 m ²	Étages 4	Pièces 18	Salles de bain 2.1
--	--------------------	---------------------	------------------------------

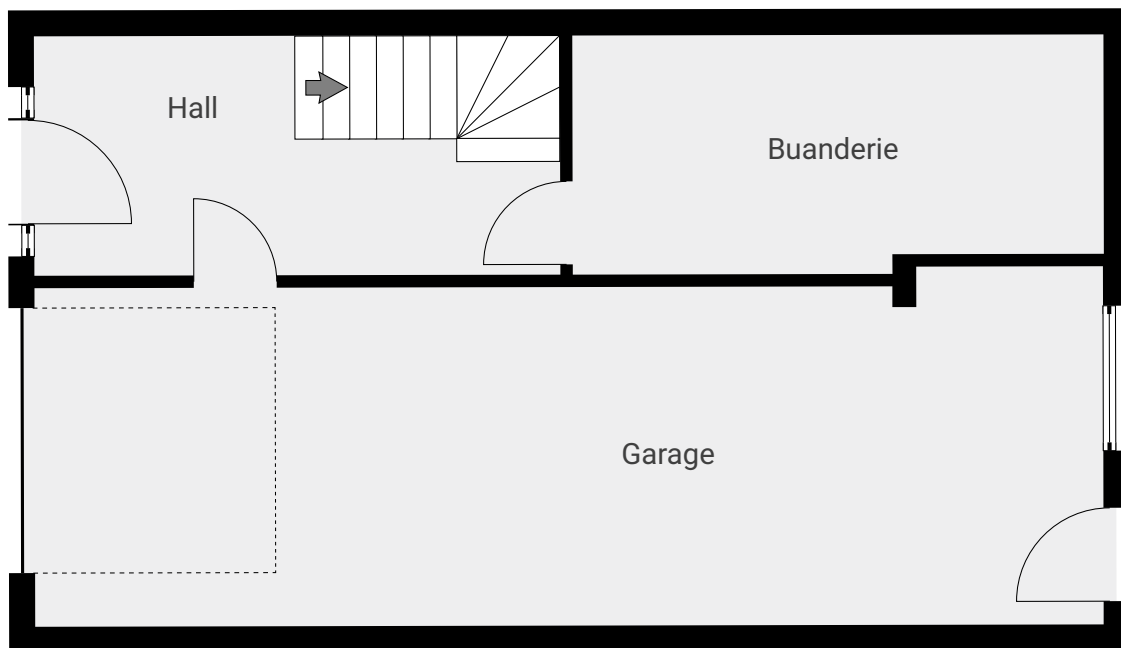
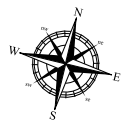
LA SENNE

SURFACE TOTALE : 195.96 m² • SURFACE HABITABLE : 150.28 m² • ÉTAGES : 4 • PIÈCES : 18



▼ Rez-de-chaussée

SURFACE TOTALE : 57.03 m² • SURFACE HABITABLE : 23.11 m² • PIÈCES : 3

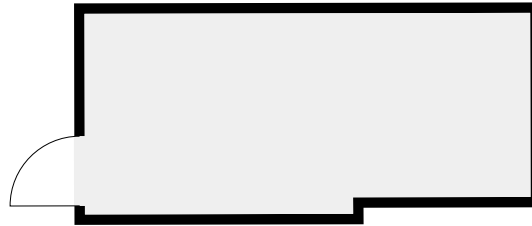
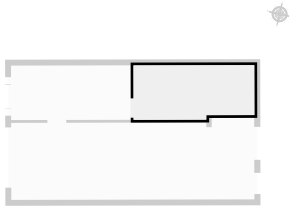


CETTE SUPERFICIE TOTALE CORRESPOND À L'ADDITION DES MESURES NETTES DE TOUTES LES PIÈCES, SANS COMPTER LES MURS, LES PASSAGES ENTRE LES PIÈCES ET LES GAINES TECHNIQUES

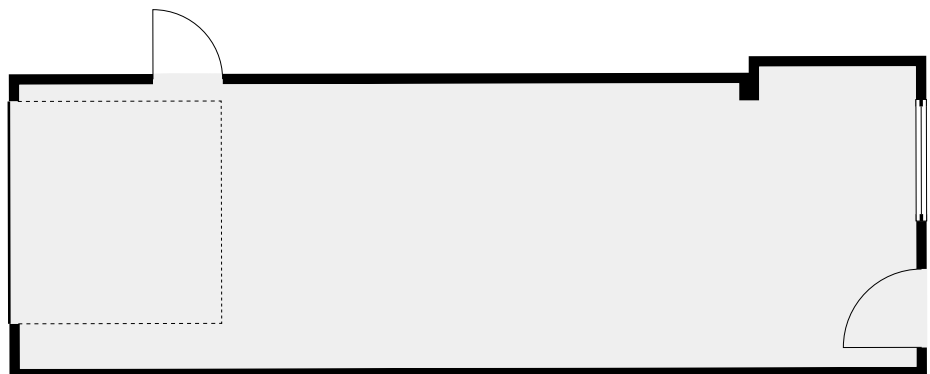
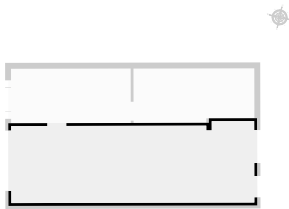
0 1 2 3m

1:73

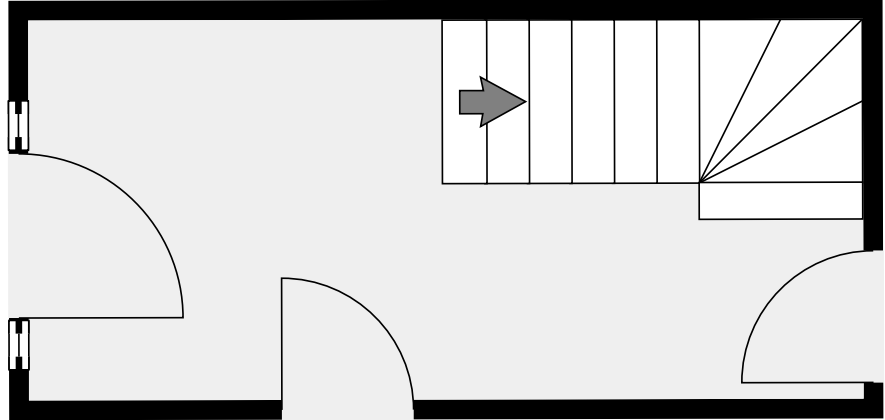
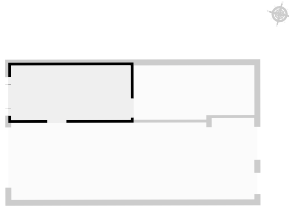
▼ Buanderie Rez-de-chaussée



▼ Garage Rez-de-chaussée



▼ Hall Rez-de-chaussée



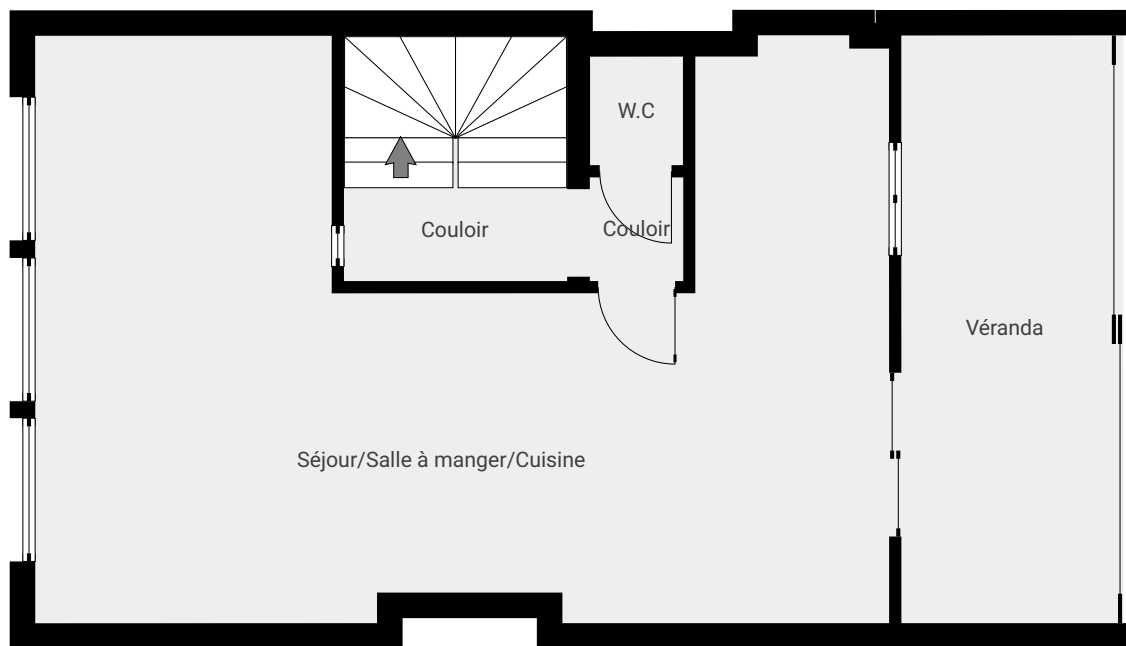
LA SENNE

SURFACE TOTALE : 195.96 m² • SURFACE HABITABLE : 150.28 m² • ÉTAGES : 4 • PIÈCES : 18



▼ 1er étage

SURFACE TOTALE : 57.09 m² • SURFACE HABITABLE : 45.33 m² • PIÈCES : 5

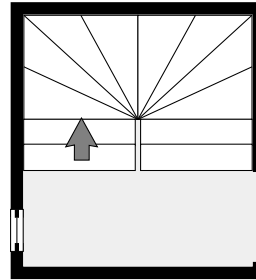
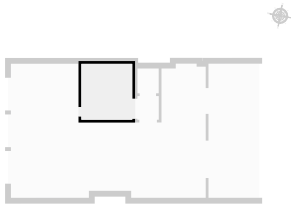


CETTE SUPERFICIE TOTALE CORRESPOND À L'ADDITION DES MESURES NETTES DE TOUTES LES PIÈCES, SANS COMPTER LES MURS, LES PASSAGES ENTRE LES PIÈCES ET LES GAINES TECHNIQUES

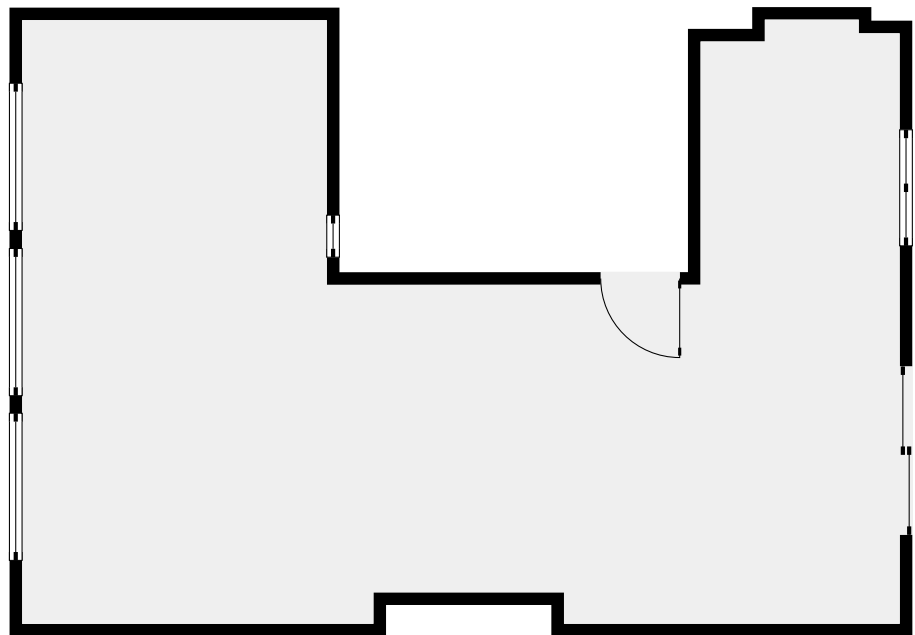
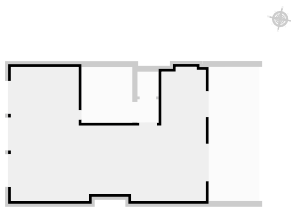
0 1 2 3m

1:74

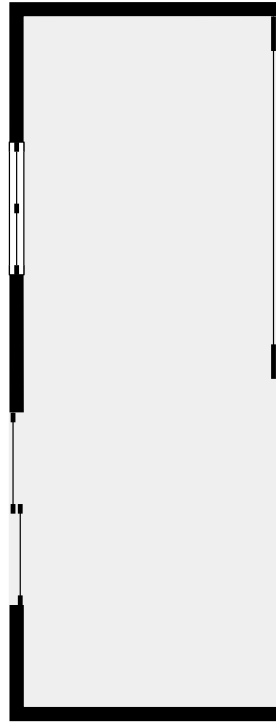
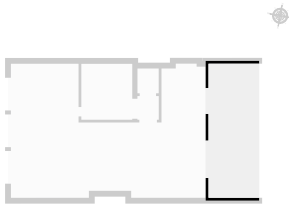
▼ Couloir 1er étage



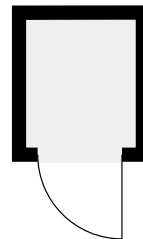
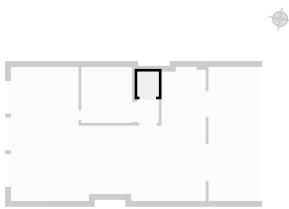
▼ Séjour/Salle à manger/Cuisine 1er étage



▼ Véranda 1er étage

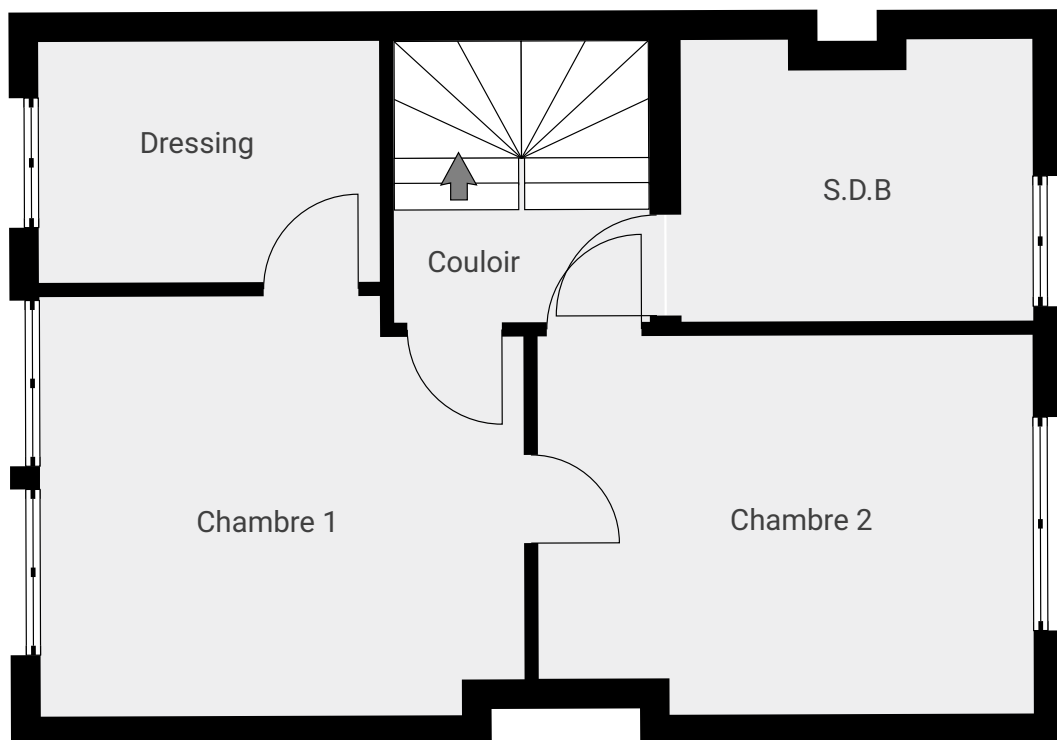
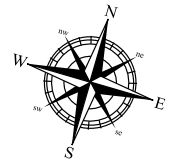


▼ W.C 1er étage

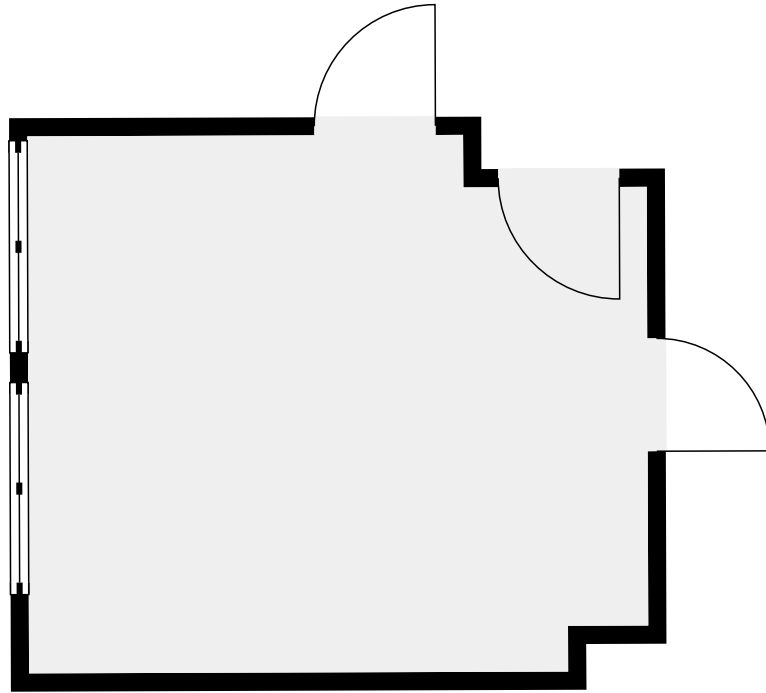
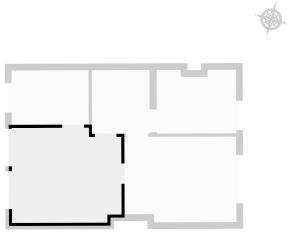


▼ 2e étage

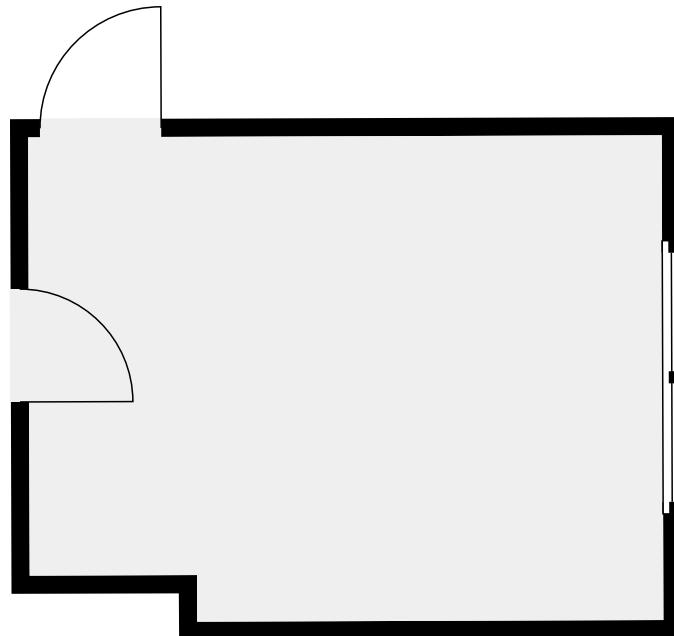
SURFACE TOTALE : 44.79 m² • SURFACE HABITABLE : 44.79 m² • PIÈCES : 5



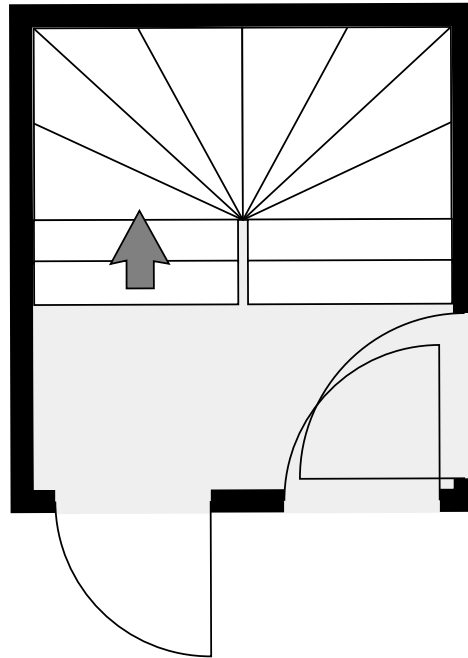
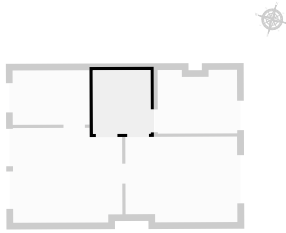
▼ Chambre 1 2e étage



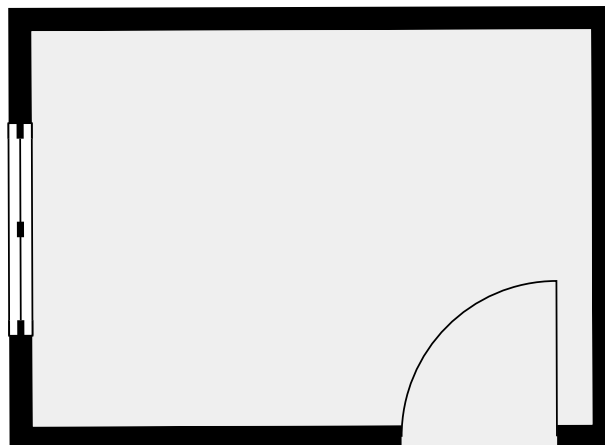
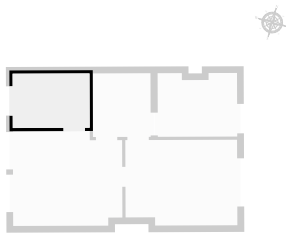
▼ Chambre 2 2e étage



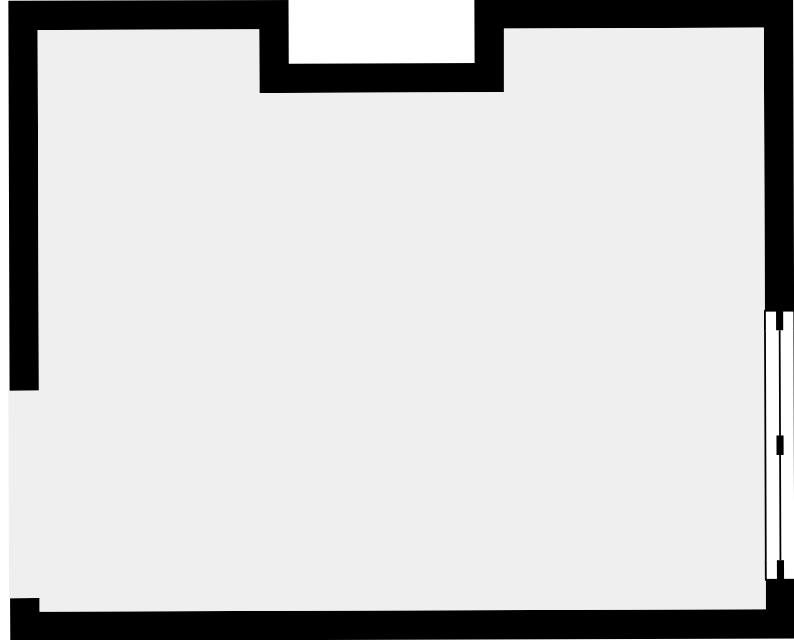
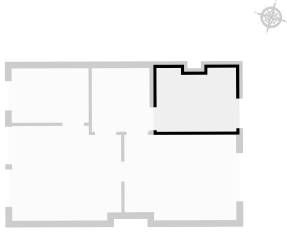
▼ Couloir 2e étage



▼ Dressing 2e étage

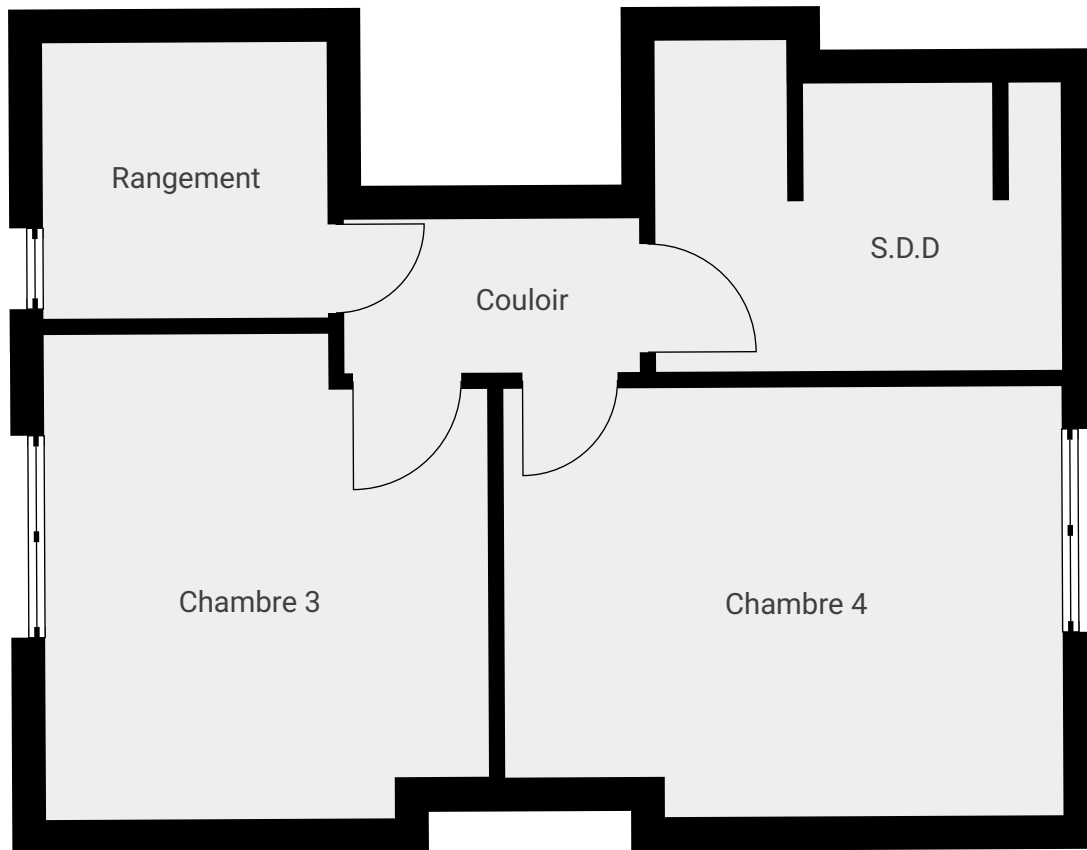
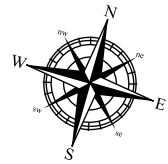


▼ **S.D.B**
2e étage

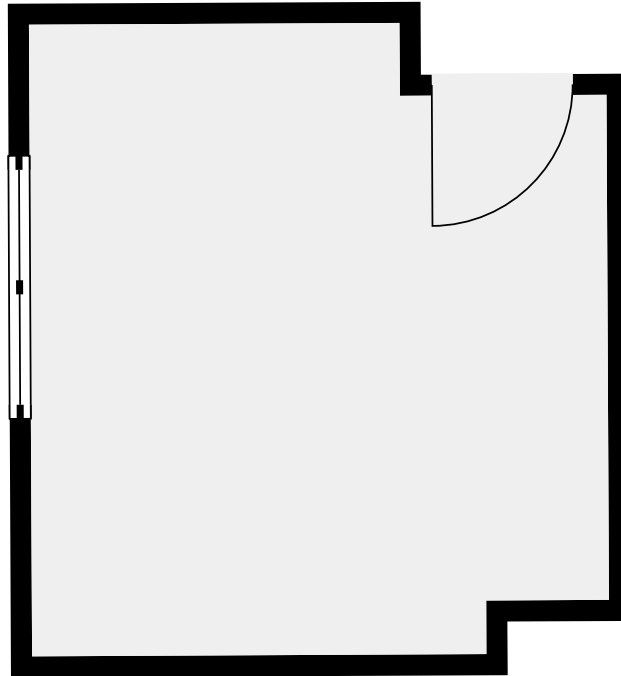
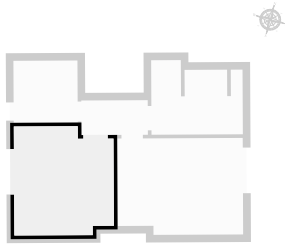


▼ 3e étage

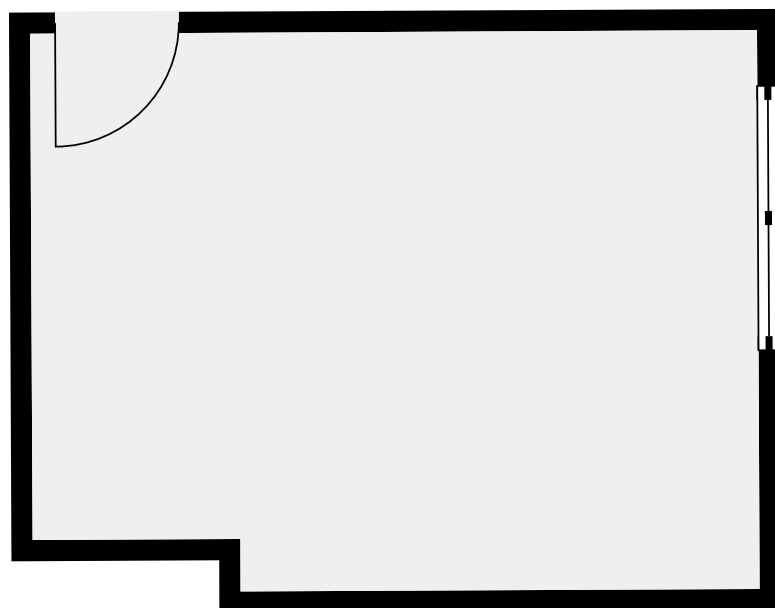
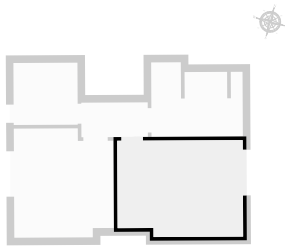
SURFACE TOTALE : 37.05 m² • SURFACE HABITABLE : 37.05 m² • PIÈCES : 5



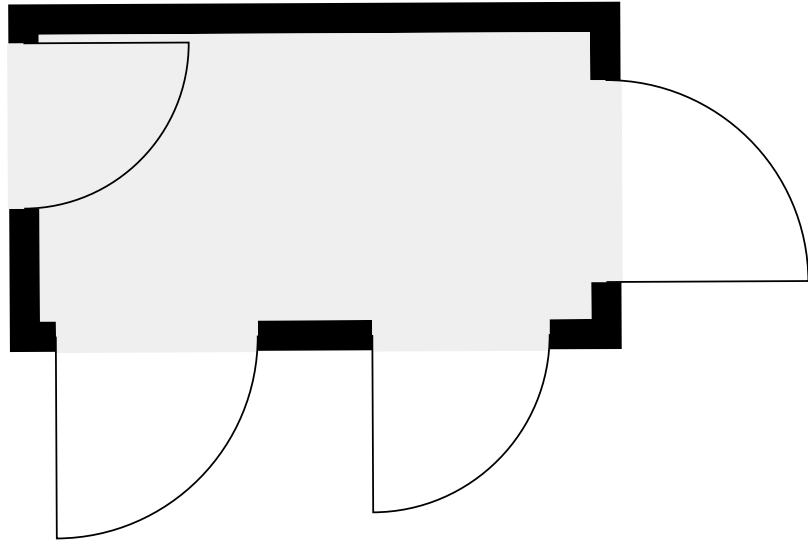
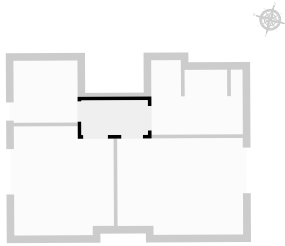
▼ Chambre 3 3e étage



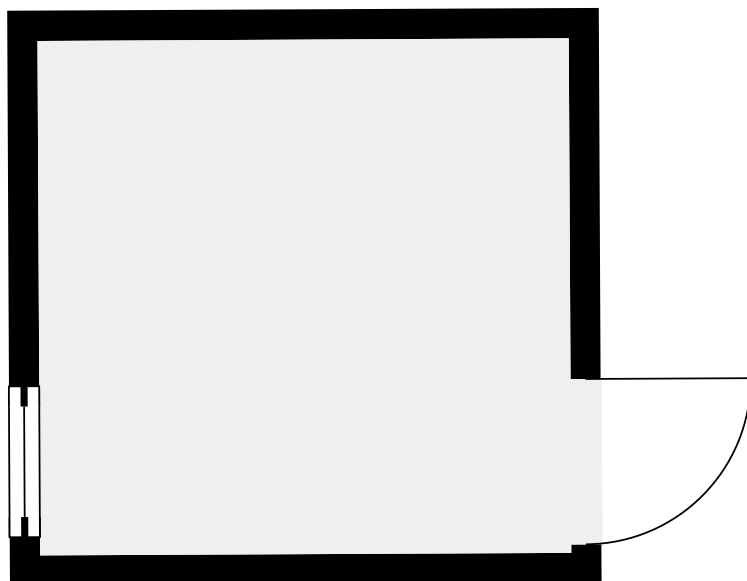
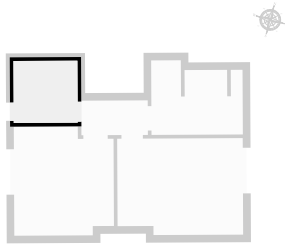
▼ Chambre 4 3e étage



▼ Couloir 3e étage



▼ Rangement 3e étage



▼ S.D.D
3e étage

